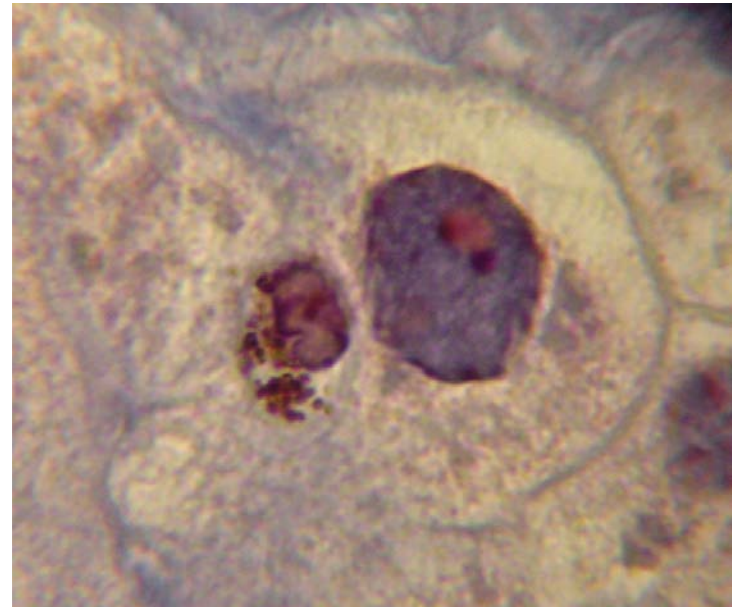
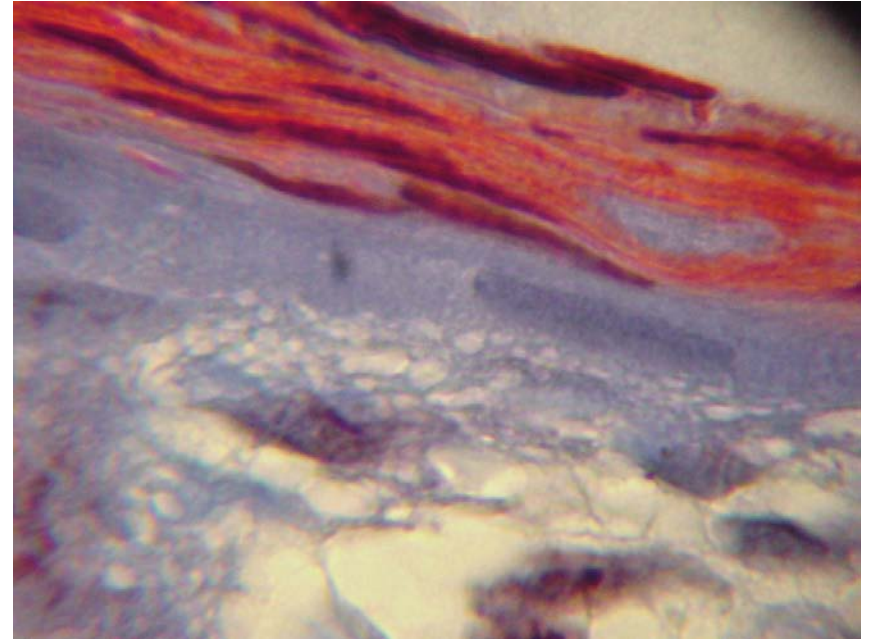
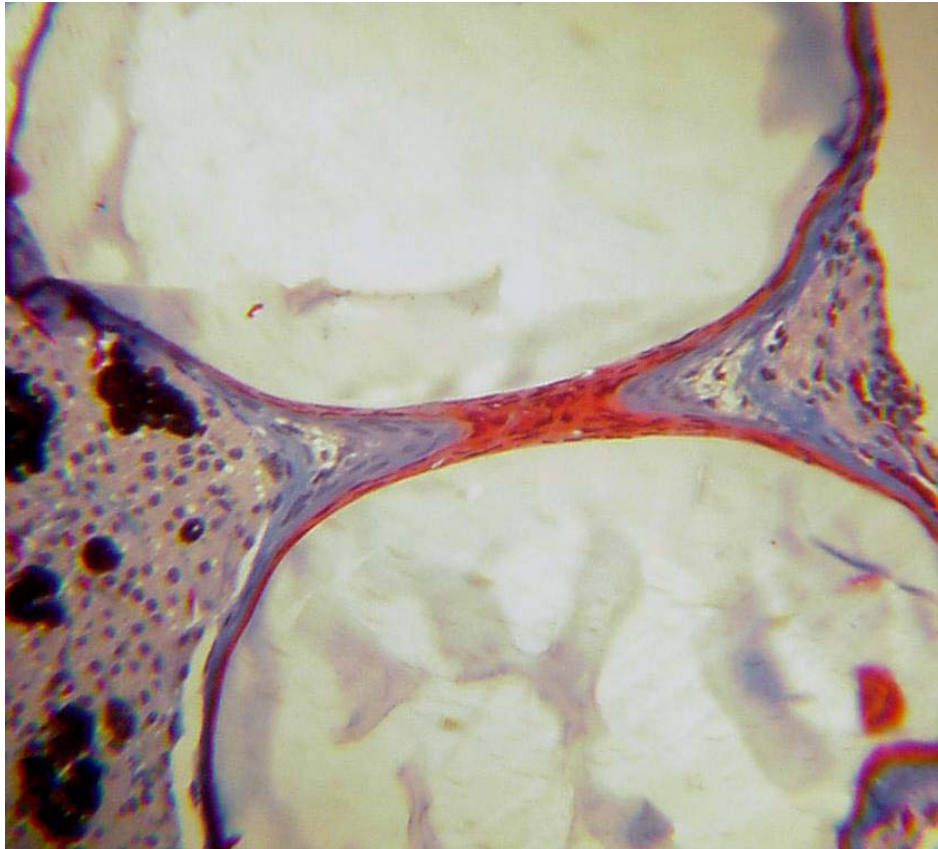
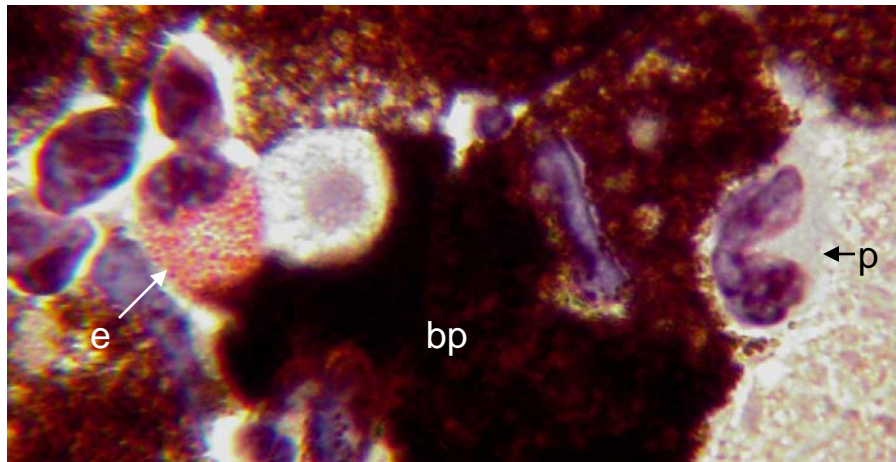
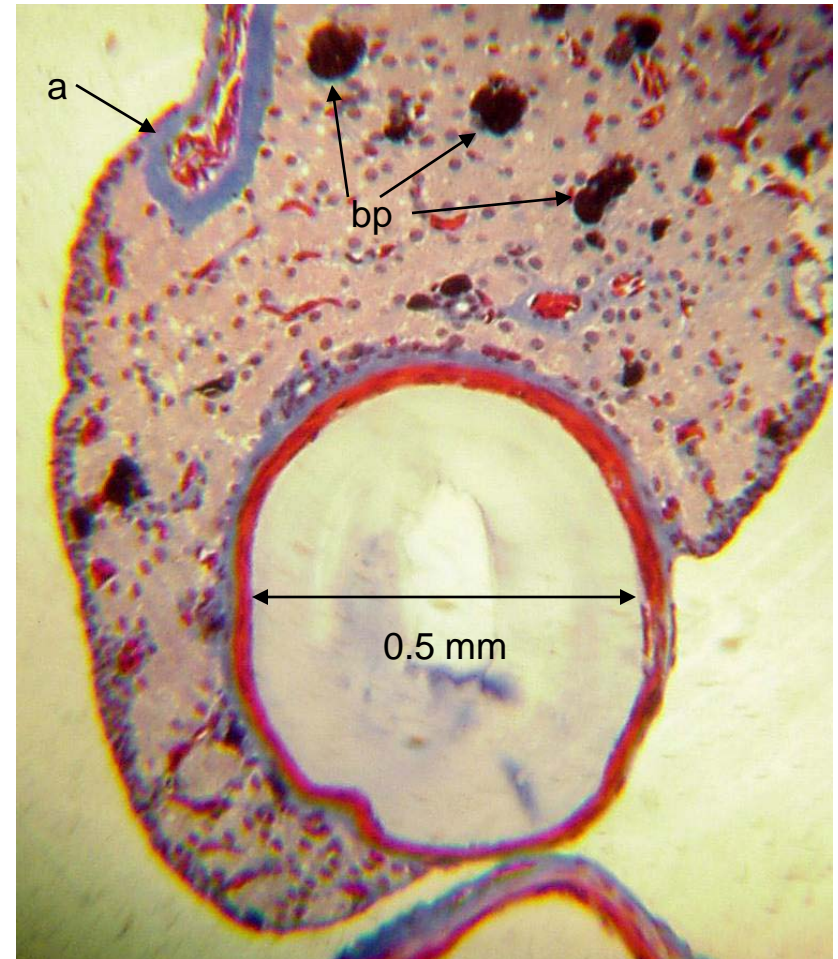


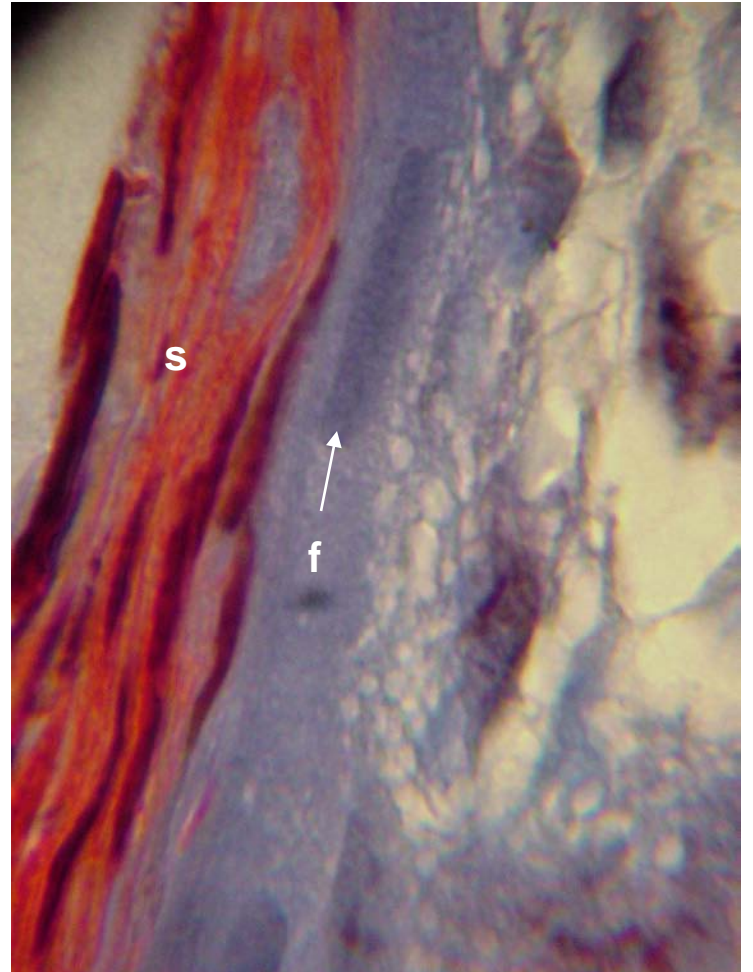
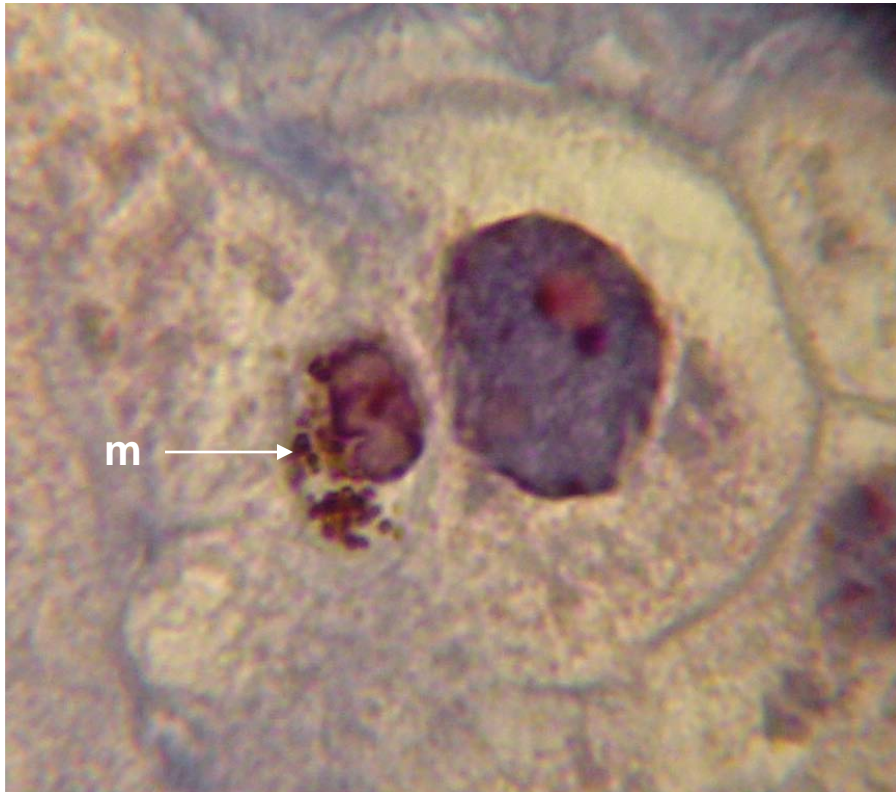
Metacercarial cysts; liver,
red-spotted newt. Trichrome.



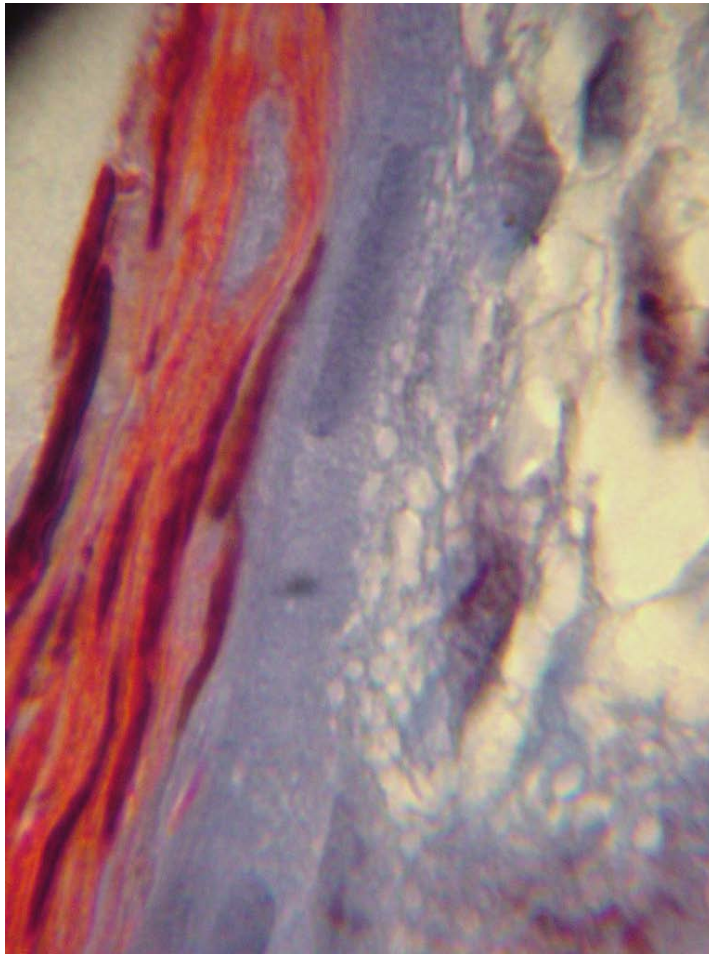
Metacercarial cyst; newt liver. a = arteriole;
bp = bile pigment; e = eosinophil;
m = macrophage; p = polymorphonuclear
leukocyte. Masson's trichrome.



Legend: f, fibroblast nucleus; m, macrophage; s, smooth muscle.



Metacercarial cyst; red-spotted newt. Mallory's trichrome.



Metacercarial cyst; red-spotted newt. bp = bile pigment; eo = eosinophil; er = erythrocyte; ma = macrophage. Mallory's trichrome.

